



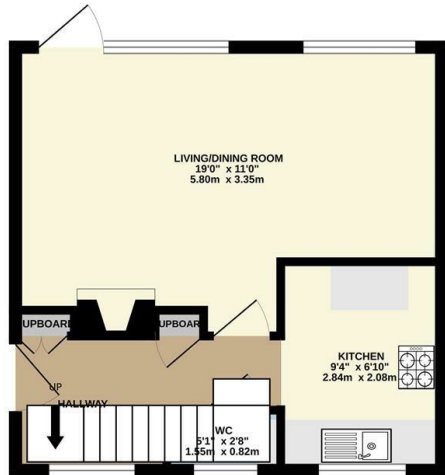
Bardsley Drive, Surrey GU9 8UQ

- End Terrace House
- Two Bedrooms
- One Bathroom
- Private Garden
- EPC Rating E - Council Tax Band C
- South Farnham
- On Street Parking
- Part Furnished
- Available End of March 2026
- Holding Deposit £305.76 Security Deposit £1,528.00

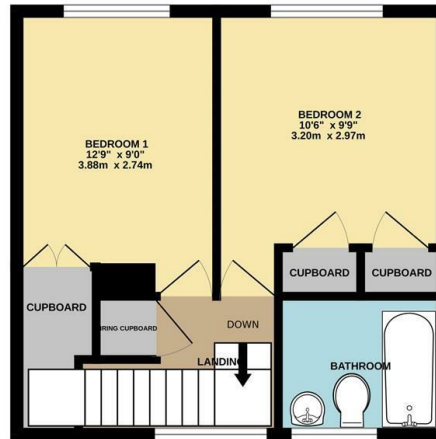
£1,325 Per Calendar Month

Local Authority **Waverley**
Borough Council
Council Tax Band **C**
EPC Rating **E**

GROUND FLOOR
353 sq.ft. (32.8 sq.m.) approx.



1ST FLOOR
356 sq.ft. (33.1 sq.m.) approx.



FOR ILLUSTRATIVE PURPOSES ONLY

TOTAL FLOOR AREA: 709 sq.ft. (65.9 sq.m.) approx.

Whilst every attempt has been made to ensure the accuracy of the floorplan contained here, measurements of doors, windows, rooms and any other items are approximate and no responsibility is taken for any error, omission or mis-statement. This plan is for illustrative purposes only and should be used as such by any prospective purchaser. The services, systems and appliances shown have not been tested and no guarantee as to their operability or efficiency can be given.
Made with Metropix ©2025

Greenwood & Co Office
The Wool House, Bear Lane, Farnham,
Surrey, GU9 7LG

Contact
01252734734
info@greenwood-
property.co.uk

Agents Note: Whilst every care has been taken to prepare these particulars, they are for guidance purposes only. All measurements are approximate and for general guidance purposes only and whilst every care has been taken to ensure accuracy, they should not be relied upon and potential buyers/tenants are advised to recheck the measurements.

